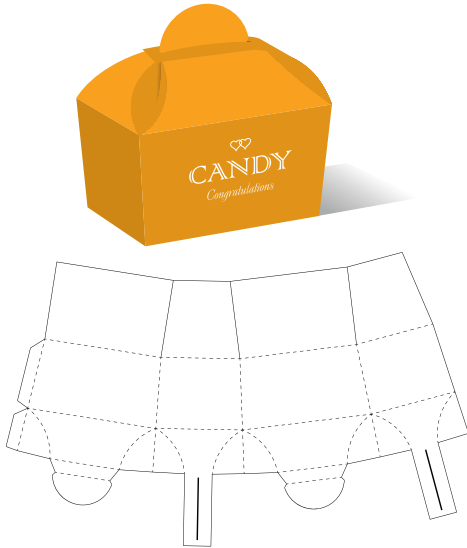
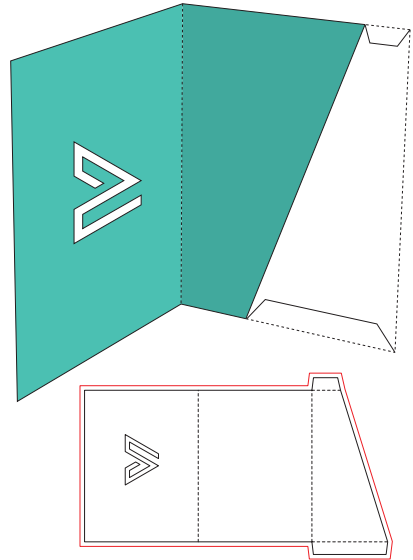


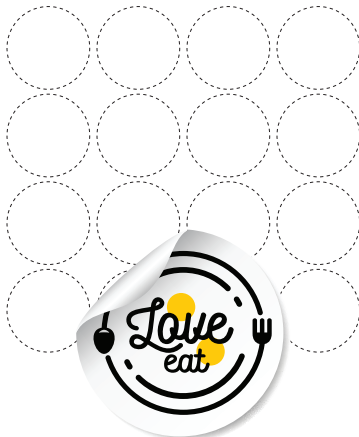
## PACKAGING DIELINES



## CUSTOM LOGO CUTOUT DIELINES



## KISS-CUT DIELINES



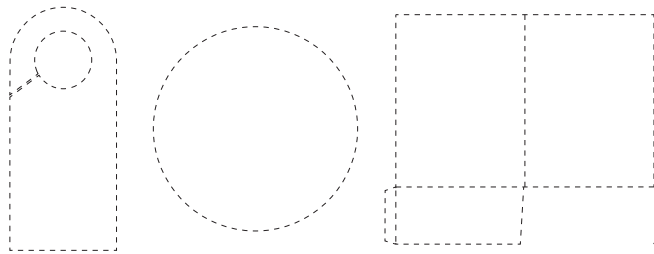
## PERFORATED DIELINES



## TIPS

- For complex designs, laser die-cutting offers the greatest precision.
- Custom dies may be cost-prohibitive on short runs and smaller jobs. Consider using a standard in-house die instead.
- Many common die-cut shapes are offered in standard templates, including geometric shapes, door-hangers, and rounded edges for corners.
- When designing, leave .125" bleed outside the dieline to ensure the artwork looks precise.

STANDARD  
IN-HOUSE  
DIES



**For templates please visit: [sundanceusa.com/resources/design-templates](https://www.sundanceusa.com/resources/design-templates)**

## SUNDANCE DIE-CUTTING

The die-cutting process uses a metal die and pressure to punch out shapes from paper. Dies can be used to completely cut through the paper, or to “kiss cut” the paper by perforating just the top layer (for example, stickers or stamps are often kiss-cut for easy removal from the backing).

The complexity and design of die-cuts vary greatly depending on the medium, your needs and your budget.

SunDance offers:

- Standard in-house dies (geometric shapes, door-hangers, and rounded edges for corners)
- Custom dies (logos, custom shapes/packages)
- Kiss-cut (stickers, stamps)
- Perfs
- Laser die-cutting
- High die
- High-speed rotary die-cutting
- Inline offset scoring and perforating